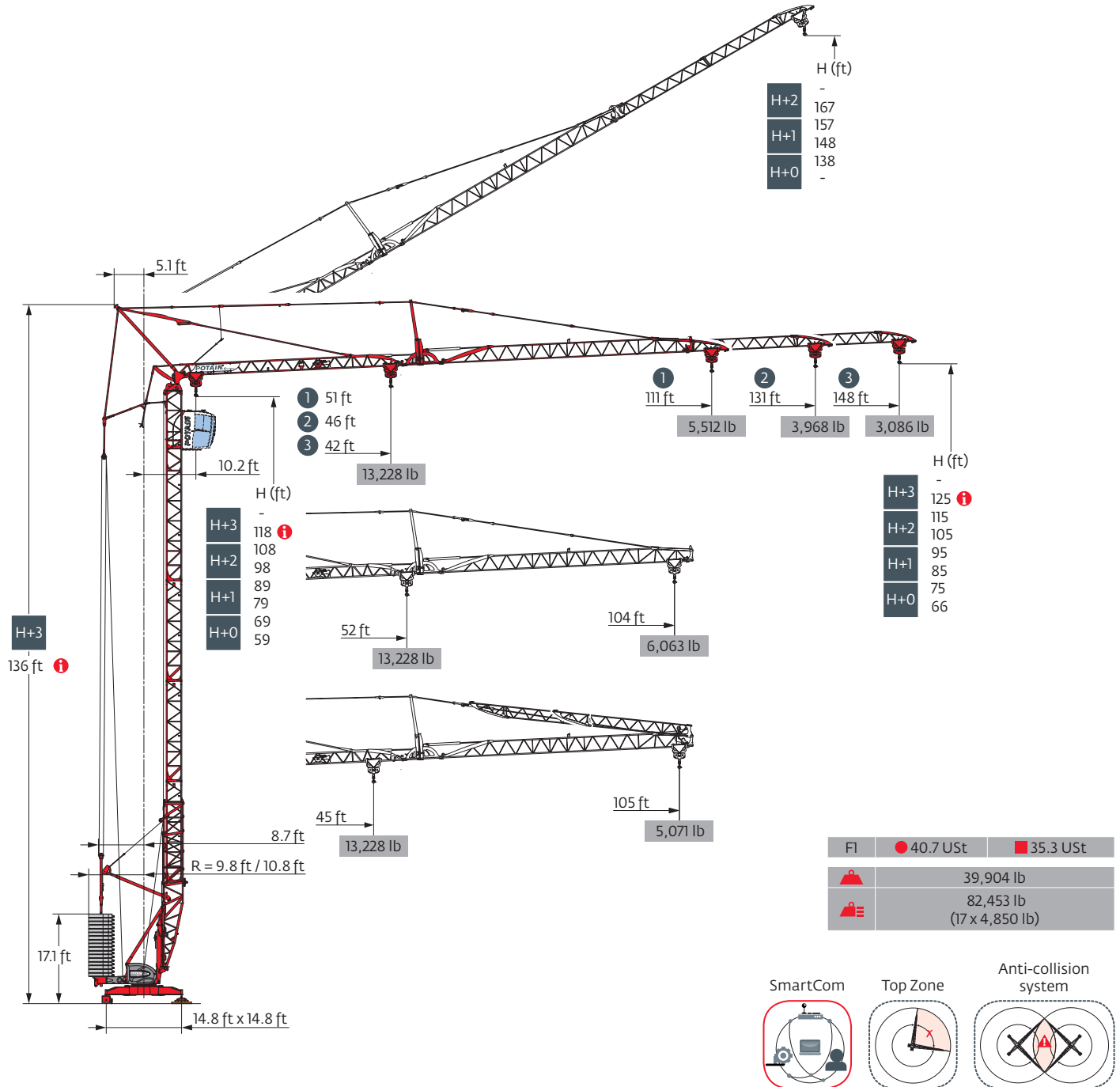
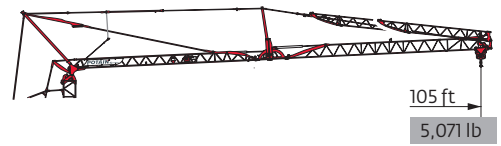
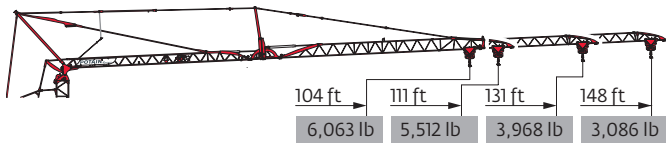


Igo T 85 A



Load curves



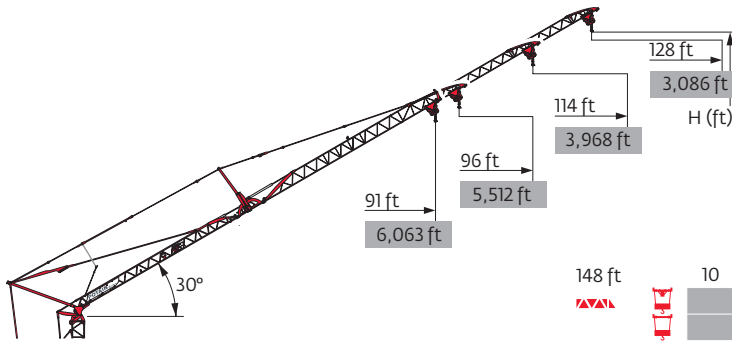
148 ft	10	▶	42	46	52	59	66	73	78	79	85	92	98	105	112	118	125	131	138	148	ft
▲▲▲			13,228	11,685	9,921	8,598	7,496	6,614	-	6,063	5,512	5,071	4,630	4,299	3,968	3,638	3,417	3,197	2,976	2,756	lb
▲▲▲								6,614	-	6,063	5,512	5,071	4,630	4,299	3,968	3,638	3,417	3,197	2,976	2,756	lb
▲▲▲									6,614	6,504	5,952	5,401	4,960	4,630	4,299	4,079	3,748	3,527	3,307	3,086	lb

131 ft	10	▶	46	52	59	66	72	81	85	85.3	92	98	105	112	118	125	131	ft
▲▲▲			13,228	11,023	9,700	8,378	7,496	6,614	-	6,173	5,622	5,181	4,850	4,409	4,189	3,858	3,638	lb
▲▲▲								6,614	-	6,173	5,622	5,181	4,850	4,409	4,189	3,858	3,638	lb
▲▲▲									6,614	6,614	6,063	5,622	5,181	4,850	4,519	4,189	3,968	lb

111 ft	10	▶	51	59	66	72	79	85	91	95	98	105	111	ft
▲▲▲			13,228	11,023	9,700	8,598	7,716	7,055	6,614	-	5,952	5,512	5,181	lb
▲▲▲									6,614	-	5,952	5,512	5,181	lb
▲▲▲										6,614	6,283	5,842	5,512	lb

104 ft	10	▶	52	59	66	72	79	85	92	96	98	104	ft
▲▲▲			13,228	11,244	9,921	8,818	7,937	7,275	6,614	-	6,173	5,732	lb
▲▲▲									6,614	-	6,173	5,732	lb
▲▲▲										6,614	6,504	6,063	lb

148 ft	10	▶	45	52	59	66	72	79	84	92	98	105	ft
▲▲▲			13,228	11,023	9,480	8,378	7,496	6,614	-	5,622	5,181	4,740	lb
▲▲▲								6,614	-	5,622	5,181	4,740	lb
▲▲▲									6,614	5,952	5,512	5,071	lb



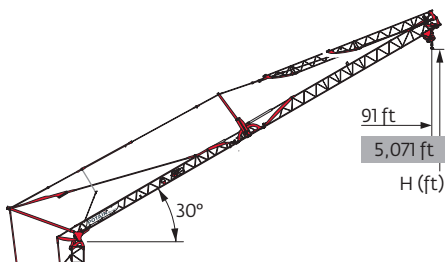
	148 ft	131 ft	111 ft	104 ft
H+2	167	159	-	-
H+1	157	149	-	-
H+0	148	139	129	126

148 ft	10	▶	64	68	72	79	85	92	98	105	112	118	125	128	ft
▲▲▲			6,614	-	5,732	5,181	4,630	4,189	3,858	3,527	3,307	3,086	2,866	2,756	lb
▲▲▲				6,614	6,173	5,512	5,071	4,630	4,189	3,968	3,638	3,417	3,197	3,086	lb

131 ft	10	▶	70	74	79	85	92	98	105	114	ft
▲▲▲			6,614	-	5,732	5,181	4,740	4,409	4,079	3,638	lb
▲▲▲				6,614	6,173	5,622	5,071	4,740	4,409	3,968	lb

111 ft	10	▶	79	82	85	92	96	ft
▲▲▲			6,614	-	5,952	5,512	5,181	lb
▲▲▲				6,614	6,393	5,842	5,512	lb







104 ft	10	▶	80	84	85	91	ft
▲▲▲			6,614	-	6,173	5,732	lb
▲▲▲				6,614	6,504	6,063	lb





	148 ft	131 ft
H+1	-	-
H+0	126	116

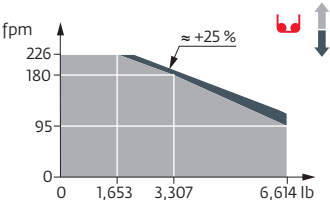
148 ft	10	▶	70	73	79	85	91	ft
▲▲▲			6,614	-	5,732	5,181	4,740	lb
▲▲▲				6,614	6,063	5,512	5,071	lb

Mechanisms

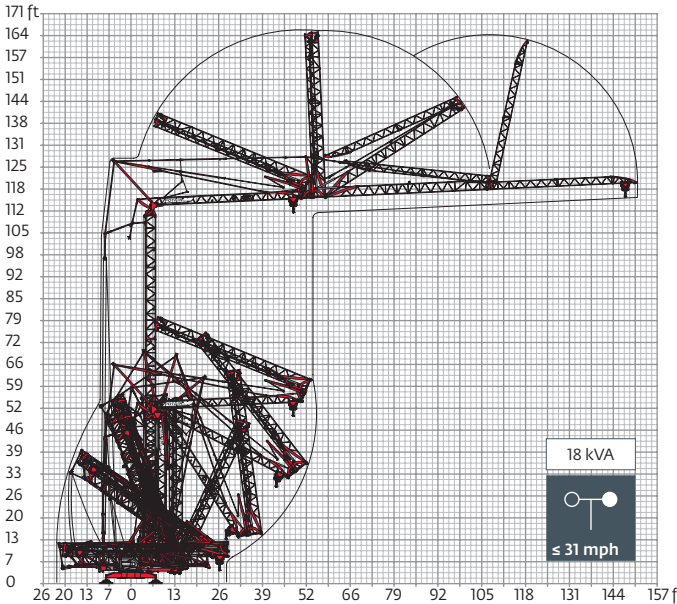
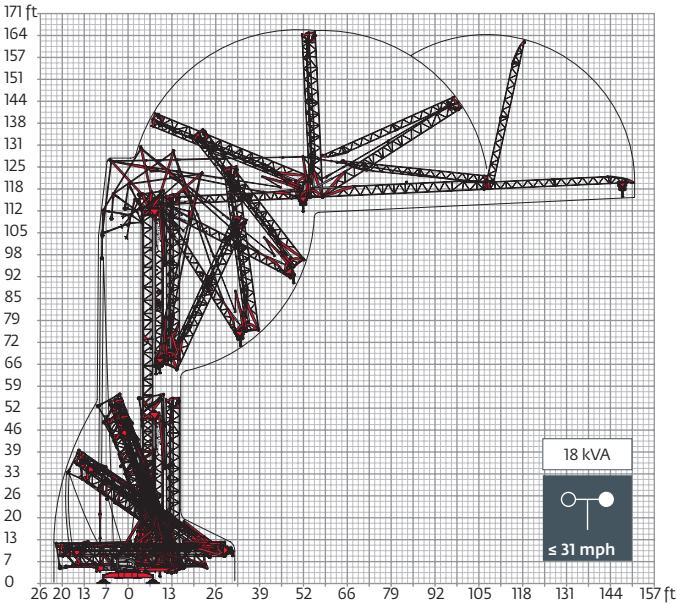
480 V - 60 Hz													hp	kW
	20 LVF 15 Optima	fpm	11	56	95	180	226	5	28	48	90	113	20	15
		lb	6,614	6,614	6,614	3,307	1,653	13,228	13,228	13,228	6,614	3,307		
	5 DVF 5	fpm	49 - 98 - 131 (4,409 → 13,228 lb) 49 - 98 - 180 (0 → 4,409 lb)									5.5	4	
	RVF 151 Optima+	rpm	0 → 0.8									5.5	4	
	TVF 324	fpm	82									2 x 4	2 x 3	

 IEC 60204-32	
480 V (+6% -10%) 60 Hz	 22 kVA  25 kVA

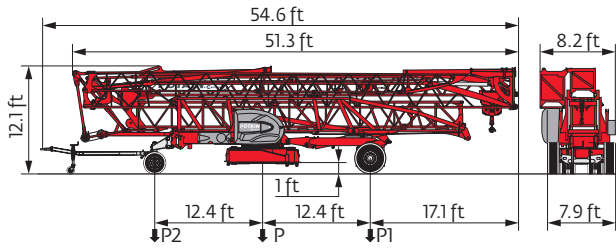
20 LVF 15 Optima



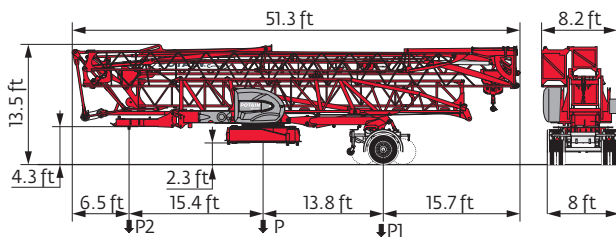
Erection



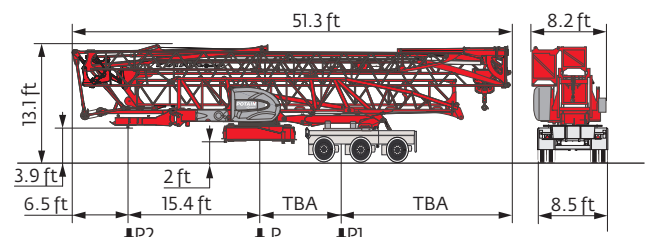
Transport



	mph	P (lb)	P1 (lb)	P2 (lb)
DJ100/S120	6	42,682	25,333	17,348
DJ105/S125	15.5	43,321	25,796	17,524
..... /.....				



	mph	P (lb)	P1 (lb)	P2 (lb)
SL121/J135	15.5	44,533	28,219	16,314



	P (lb)	P1 (lb)	P2 (lb)
North America Highway Axle	i	i	i

- R** Rear slewing radius
- Reactions in service
- Reactions out of service
- ⚖** Weight without load, without ballast, without transport axles, with max. jib and standard height
- ⚖** Total ballast weight
- Standard equipment
- Options
- kVA** Required power
- i** Consult us
- ⬆** Hoisting
- ⬆** Trolleying
- ⬆** Slewing
- ⬆** Travelling

⚠ This commercial document is not legally binding. For any technical information, please refer to the corresponding instructions.



RMC
 ROCKY MOUNTAIN CRANE
208-696-1476
 14032 HWY 55
 McCall, ID 83638
rockymtncranes.com



© 2019 The Manitowoc Company, Inc.
www.manitowoc.com